



SECOND TERM GLOBAL TEST

4° ESO



Exercise 1: (1 pto) Work out using the properties of logarithms and indicating all of the steps

$$\log_3 \frac{\sqrt{3} \cdot \sqrt[3]{9}}{\sqrt[4]{27}} = \frac{5}{12}$$

Exercise 2: (1.25 ptos) Work out:

a) $\lim_{x \rightarrow 1} \frac{x^2 + 4x - 5}{x^2 - 1} = 3$ (0.5)

b) $\lim_{x \rightarrow \infty} \left(3x - \frac{3x^2 - 4x + 7}{x - 1} \right) = 1$ (0.75)

Exercise 3: (0.75 ptos) Find the asymptotes of the function $f(x) = \frac{5x^2 - 4x + 3}{x^2 - 1} \rightarrow \begin{cases} \underline{HA} & y = 5 \\ \underline{VA} & x = \pm 1 \end{cases}$

Exercise 4: (2 ptos) Find the domain of the following functions:

a) $f(x) = \frac{x^2 - 4}{\sqrt{x^2 - 5x + 4}} \rightarrow \text{Dom } f = (-\infty, 1) \cup (4, +\infty)$ (0.75)

b) $f(x) = \frac{\sqrt{x+5}}{x^2 - 4} \rightarrow \text{Dom } f = [-5, -2) \cup (-2, 2) \cup (2, +\infty)$ (0.75)

c) $f(x) = \frac{2x - 1}{2x - 5} \rightarrow \text{Dom } f = \mathbb{R} - \left\{ \frac{5}{2} \right\}$ (0.5)

Exercise 5: (1 pto) Find the general equation of the line going through the points $A(2, -3)$ and $B(5, 1)$

$$4x - 3y - 17 = 0$$

Exercise 6: (1 pto) If $\cos \alpha = 0.72$ find the values of $\sin \alpha$, $\tan \alpha$ and the angle α using degrees, minutes and seconds. Round the answers to four decimal figures if needed

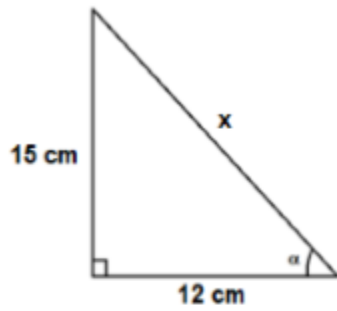
$$\sin \alpha = 0.694$$

$$\tan \alpha = 0.9639$$

$$\alpha = 43^\circ 56' 44''$$



Exercise 7: (1.25 pts) Find the three principal trigonometric functions of the angle α with four decimal figures, and the value of the missing side. You can't use Pythagoras' theorem.



$$\begin{aligned}\tan \alpha &= 1.25 \\ \cos \alpha &= 0.6247 \\ \sin \alpha &= 0.7809 \\ x &= 19.21 \text{ cm}\end{aligned}$$

Exercise 8: (1.75 pts) Sketch the graph of the piecewise function:

$$f(x) = \begin{cases} 3 & x < -1 \\ 2^x & -1 \leq x < 3 \\ x^2 - 12x + 35 & 3 \leq x < 8 \end{cases}$$

